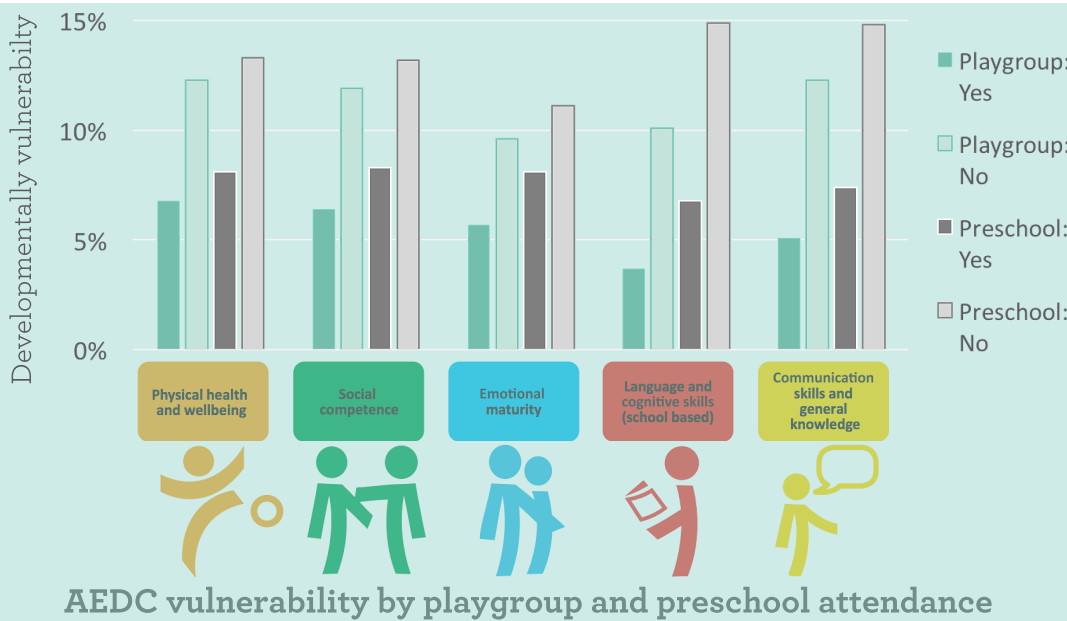


# Playgroup, more than just fun



Children that attend playgroup have half the rate of vulnerability across all 5 areas of child development at school entry, as measured by the Australian Early developmental Index;<sup>1</sup> the same relationship that exists with preschool attendance.<sup>2</sup>



Playgroup children have

**1/2**

the risk of  
vulnerability  
at school entry<sup>1</sup>

## Research shows that:

Greater participation in early childhood services results in lower rates of vulnerability at school entry.<sup>3</sup>

Playgroup promotes the use of early childhood services.

## Research shows that:

Family risk factors are the key drivers of academic school readiness and family risk is strongly influenced by neighbourhood socioeconomic status (SES).<sup>4</sup>

Supported playgroups address family risk factors.

It is important to start and maintain playgroups in low SES neighbourhoods.

## Research shows that:

Academic trajectories remain stable from 4-5 years onwards.<sup>5</sup>

It is important to invest in the years prior to school entry.

## Research shows that:

Parental engagement has a comparable impact on student achievement as the students' parent completing an additional 4-6 years of education or an additional \$1,000 per pupil in expenditures.<sup>6</sup>

Playgroup promotes parental engagement in their child's learning and development.